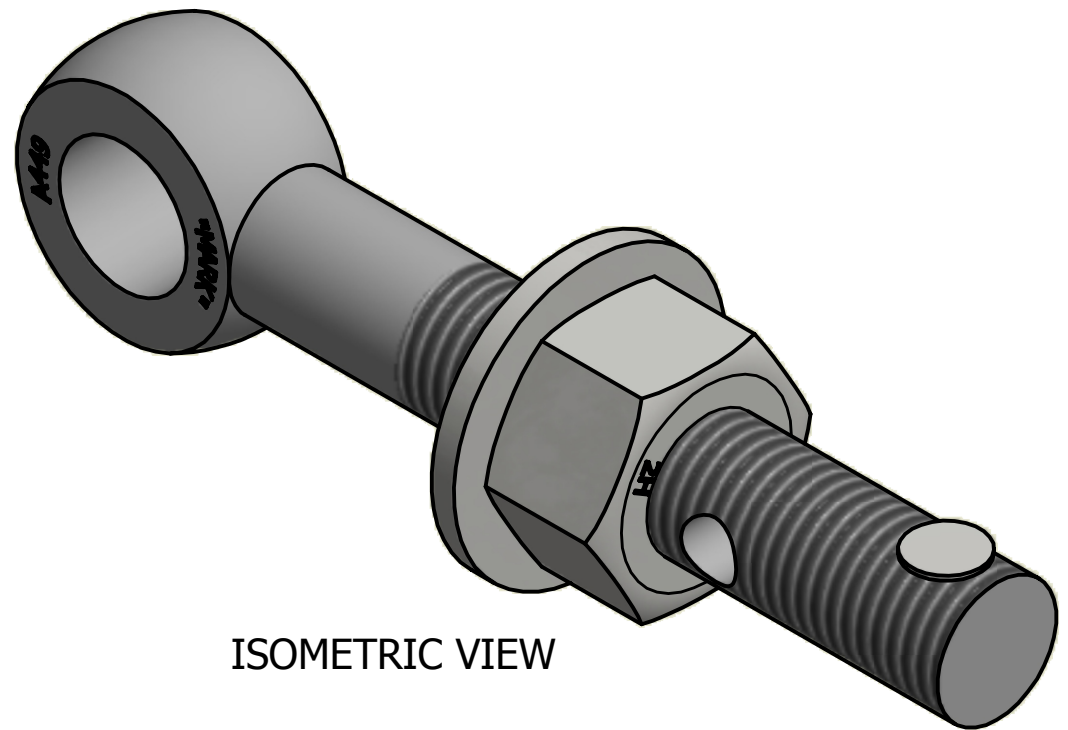
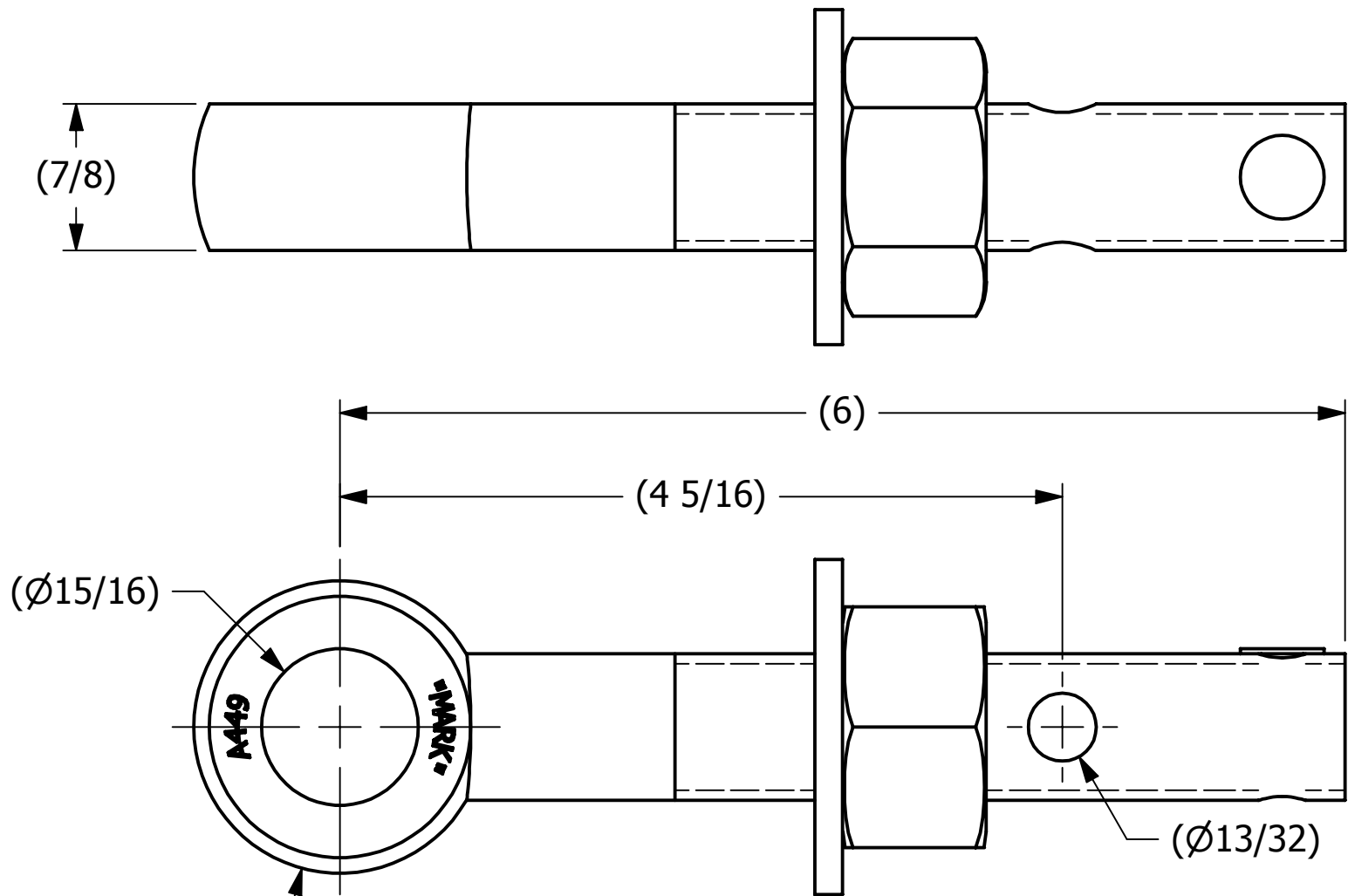



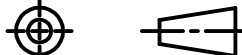
SALES DRAWING

SALES DRAWING



ISOMETRIC VIEW

C	RJP	11-9-15	UPDATED MARKING
B	AJB	5-5-06	CHANGED MATERIL SPEC.
A	ACC	8-12-03	ADDED NEW PART TO SYSTEM
REV	BY	DATE	DESCRIPTION

UNLESS OTHERWISE SPECIFIED DIMENSIONAL TOLERANCES		DRAWN BY:	CHL	<div> SALCO PRODUCTS, INC.</div>		
FRACTIONAL:	±1/16	CHECKED BY:	ACC			
X.XX:	±.03	PROTOTYPE BY:	CHL	EYEBOLT ASSEMBLY 7/8"X6"		
X.XXX:	±.015	PROTOTYPE DATE:	8/12/2003	MATERIAL: CARBON STEEL, ASTM A449 TYPE 1		
ANGULAR:	±1°	APPROVED FOR PRODUCTION BY:	ACC	PROJECT #:	SHEET #:	SCALE:
DEBURR ALL SHARP EDGES. ALL MACHINED SURFACES TO HAVE A 125 RMS FINISH UNLESS NOTED OTHERWISE.				030112	1 OF 1	1:1
THIRD ANGLE PROJECTION		PRODUCTION DATE:	8/12/2003	DRAWING #:	PART #:	
				B17944	EB786XHAG5	

THIS PRINT, PROPERTY OF SALCO PRODUCTS INC., CONTAINS PROPRIETARY INFORMATION
AND MUST NOT BE COPIED, REPRODUCED, OR USED DETRIMENTALLY TO OUR INTEREST.